

STEPS BEYOND

GROUNDED

# Base color of operations!

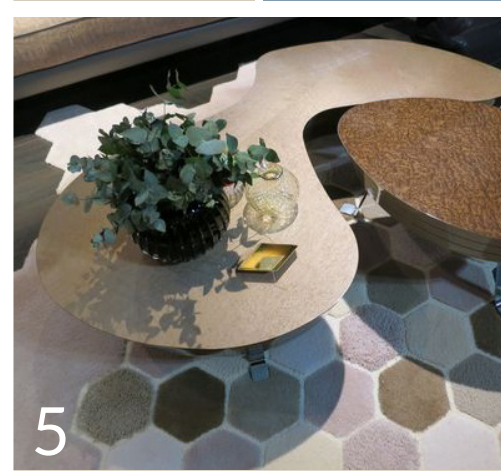
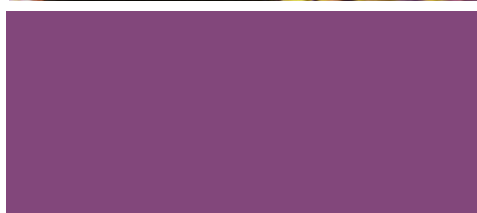
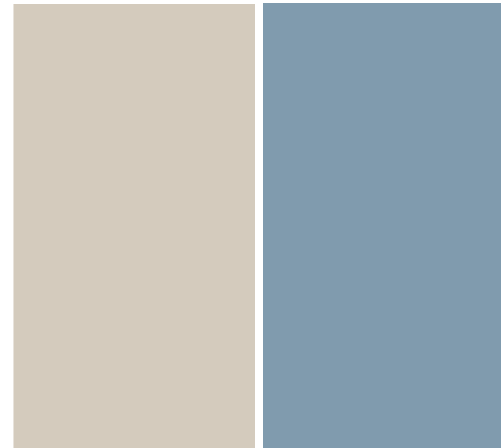
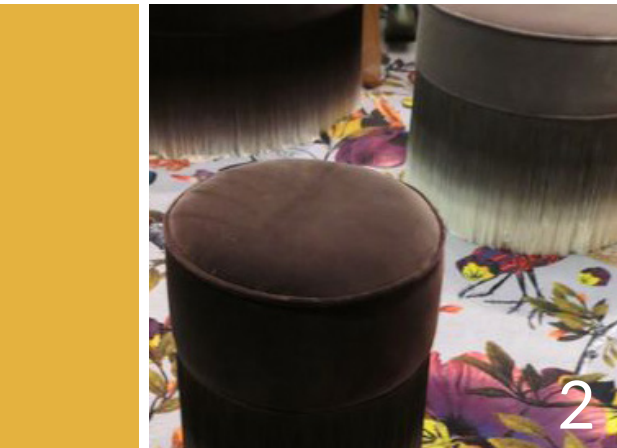
Having established themselves as trend forward hues, and the evolution of gray, the warm gray colors of **Steps Beyond** and **Grounded** are comfortable on their own, or becoming a base from which other hues can leap.

They form a modern aesthetic when used together, and when paired will shift with texture, sheen, or material, to add visual interest and a special dynamic. With fashion trends experiencing a monochromatic moment, **Steps Beyond** and **Grounded** are

uniquely suited to a new gray chic. Their subtle opulence is far from a banker's gray flannel suit.

Whether fashion, or interiors, a special quality is their ability to relate well with similar colors. Both are excellent playing off lavender and plum, dark blue, burgundy, off-white and metallics such as pewter and matte gold.

**Steps Beyond** and **Grounded** seemingly come from a simple origin, but their warmth and richness establishes new style and aesthetic possibilities.



Color Sells  
and the right colors sell better.®

NOVEMBER 2018 CONTRIBUTORS: Judith van Vliet, Sandy Sampson, Mark Woodman, Marianne Cole

1. Moooi at MDW17; 2. Moooi at MDW17;  
3. Patricia Urquiola at MDW17; 4. Capel Rug;  
5. Seen at MDW17